

# Facts4Workers - short

iKnow – SAMI40 workshop, 12.10.2017  
Norah Neuhuber, Martin Wifling



This project has received funding from the European Union's **Horizon 2020** research and innovation programme under Grant Agreement n° 636778

# Worker Centric Workplaces in Smart Factories



H2020-FoF4

Developing smart  
factories that are  
attractive to workers

Number / Type

636778 / IA

Acronym

**FACTS4WORKERS**

**1.12.2014**

Start date

**48 months**

Duration

**7,9 mio€**

Total estimated project costs

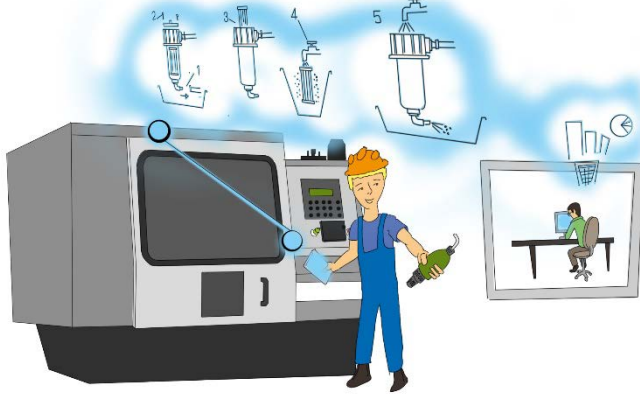
**6,3 mio€**

Requested Grant

**1081**

Total person months

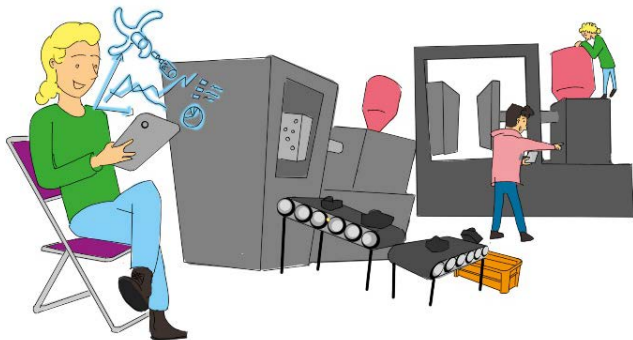
## In-situ mobile learning in the production



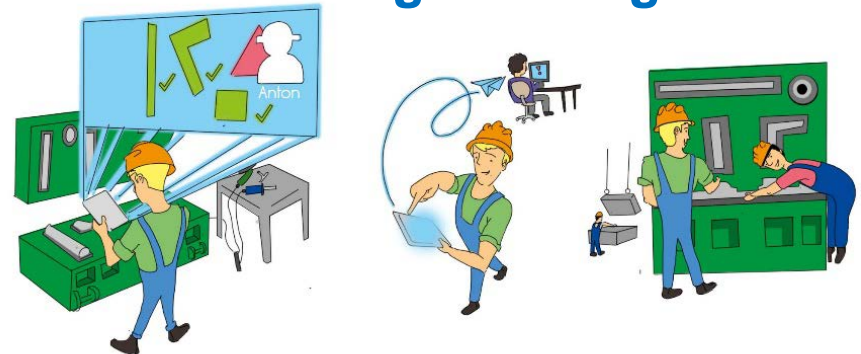
## Personalised augmented operator



## Self-learning manufacturing workplaces



## Worker-centric rich-media knowledge sharing



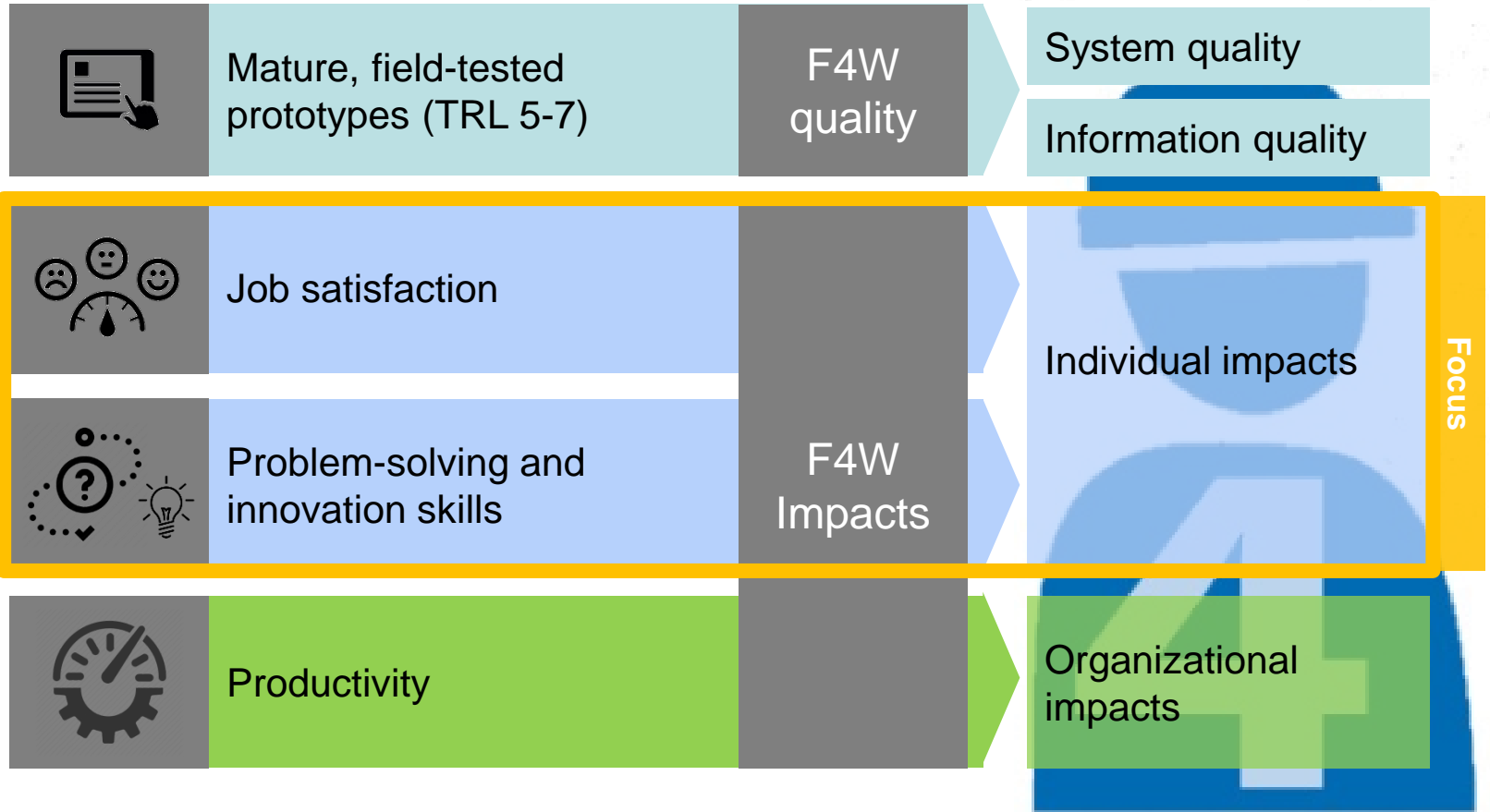
# Consortium Partners



- 4 Large Industry Partners
- 2 SME's
- 5 non-profit Research Centers
- 4 Universities



# Project Goals



Focus

Technical opportunities for smart factories

Social & artificial Intelligence

Wearable ICT



Cyber-physical systems

Robots & Autom.

## Increase cognitive job satisfaction

Spreitzer 1995;  
Deci, Connell, and Ryan 1989



## Assistance vs. Paternalism

### Autonomy

Freedom of choice regarding what to do when  
and the possibility to drive own decisions

## Autonomy

### Variety

The diversity of tasks  
during the daily work

## Variety

### Competence

Better informed decision  
making

## Competence

- Better individual and collaborative problem solving
- Increased innovation

## Autonomy

Freedom of choice regarding what to do when and the possibility to drive own decisions

## Variety

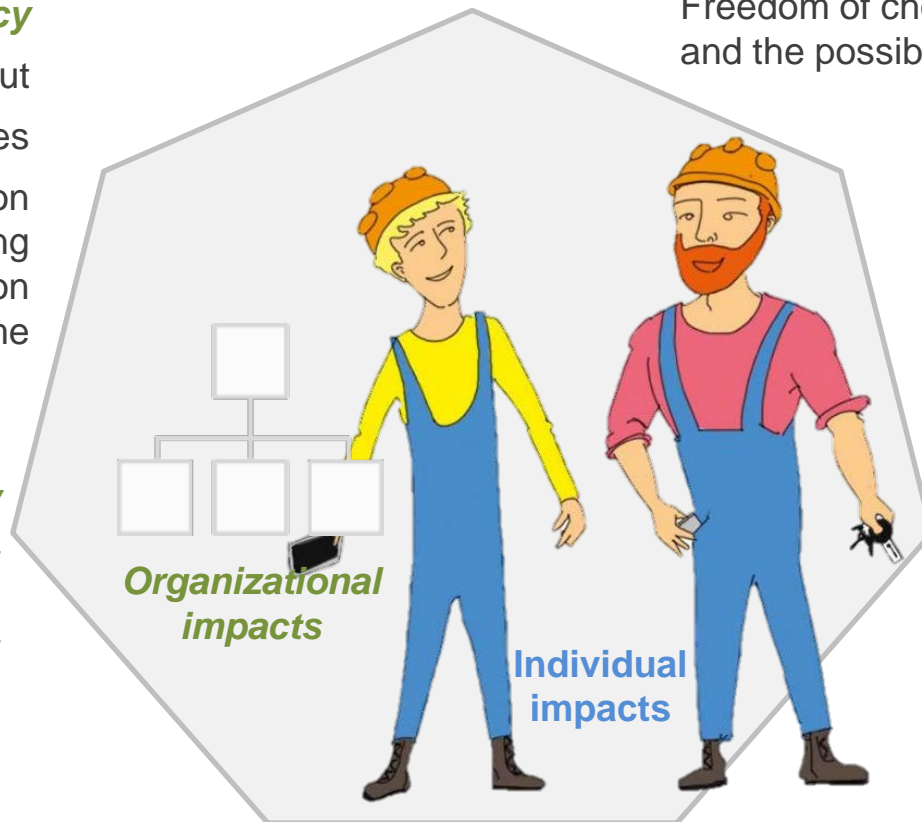
The diversity of tasks during the daily work

## Competence

- Better informed decision making
- Better individual and collaborative problem solving
- Increased innovation skills

## Relatedness

- Increased participation/ involvement
- Better awareness



## Time efficiency

- Higher throughput
- Lower downtimes
  - Faster decision making and reduced reaction time

## Quality

- Better quality monitoring & traceability
- Better fault and deviation prediction

## Protection

- Reduced stress level
- Reduced cognitive overload
- Less frustrating work

# Thank you!

For further information,  
please visit us online!



## Worker-Centric Workplaces for Smart Factories - FACTS4WORKERS



It is the high ambition of our project to create “FACTorieS for WORKERS” (FACTS4WORKERS), therefore a serious effort is put into integrating already available IT enablers into a seamless & flexible Smart Factory infrastructure based on worker-centric and data-driven technology building blocks.

As FACTS4WORKERS is underpinned by a clear human-centric approach, usability, user experience and technology acceptance  
FACTS4WORKERS - iKnow2017